

HYDRAULIC

CHLOR-SCALE 150™FOR 150 lb (68 kg) CHLORINE & SO₂ CYLINDERS**SAFELY DOCUMENT**AMOUNT USED & MONITOR
REMAINING CHEMICAL**HELPS PREVENT**UNDER AND OVERFEED
CONDITIONS**HYDRAULIC SYSTEM WITH**DIAL DISPLAY REQUIRES NO
ELECTRICAL POWER**OPTIONAL 4-20mA**OUTPUTS AND
LEVEL ALARMS

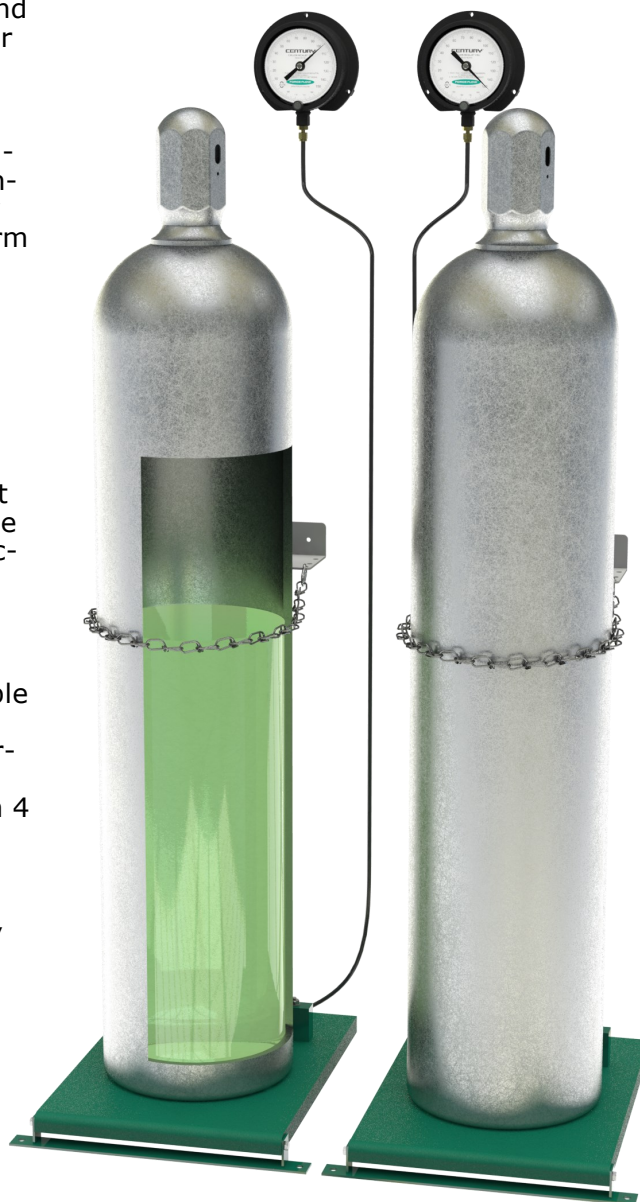
The Hydraulic CHLOR-SCALE 150™ is designed for monitoring the amount of chemical used and how much remains in 150 lb (68 kg) chlorine and sulfur dioxide cylinders commonly used at water and wastewater treatment plants, well heads, booster stations and industrial plants.

The solid PVC plastic scale platform is corrosion-proof and with a low height of only 1 5/8", cylinders can easily be rolled on and off without any lifting. The hydraulic load cell under the platform senses the weight and through a length of PVC coated copper tubing connects to either the Century™ analog dial or SOLO XT™ digital display. Each platform includes a wall mounted chaining bracket that provides security for the cylinder while on the scale platform.

The Century dial requires no power making the whole scale immune to problems that can affect electronic scales such as power failures, damage from lightning strikes or power surges, and electrical interference. A simple tare adjust knob allows easy adjustment of the dial so only the actual chemical weight is displayed.

The SOLO XT display uses the same ultra durable hydraulic load cell but provides a digital weight display. The SOLO XT is available in three different configurations: battery powered, loop powered with 4-20mA output, or loop powered with 4-20mA output and level alarm output relay.

A full 5-year warranty backs each and every CHLOR-SCALE 150 INCLUDING THE PLATFORM, LOAD CELL AND INDICATOR. Buying a CHLOR-SCALE 150 means buying the best!

NO FINGER POINTING.
NO FINE PRINT.™Century
Dial DisplaySOLO XT
Digital Display
See Bulletin 514
for more info**FORCE FLOW****CHECK. CONTROL. COMPLY.**

CHLOR-SCALE 150™

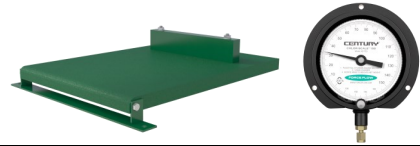
FOR 150 lb (68 kg) Chlorine & SO₂ Cylinders

REVISION 4/21

MODELS & ORDERING INFORMATION

Hydraulic Chlor-Scale 150 with Century Dial

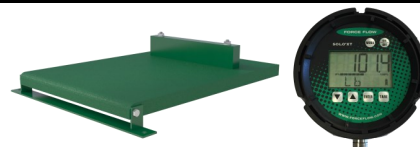
Models include platform assembly, load cell with 6 feet of tubing, chaining bracket/tool rack and dial indicator. For tubing lengths over 6 feet and additional chaining brackets, please consult factory. For 4-20mA output transmitters and level alarm relays, see OPTIONS & ACCESSORIES section below.



MODEL (METRIC)	# OF PLATFORMS (CYLINDERS)	CYLINDER SIZE	PLATFORM CAPACITY	DISPLAY INCREMENTS	SHIPPING WEIGHT
4D150-1	1	10 3/8" Diameter	300 lb	1 lb	26 lb
4D150-2	2	10 3/8" Diameter	300 lb	1 lb	46 lb
4D100K-1	1	203mm - 343 mm Diameter	150 kg	0.5 kg	12 kg
4D100K-2	2	203mm - 343 mm Diameter	150 kg	0.5 kg	21 kg

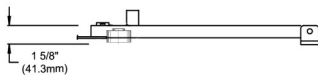
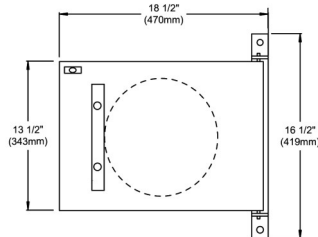
Hydraulic Chlor-Scale 150 with Solo XT

Models include platform assembly, load cell with 6 feet of tubing, chaining bracket/tool rack and SOLO XT digital indicator. For tubing lengths over 6 feet or additional chaining brackets, please consult factory. For loop powered 4-20mA output models and relay output models, see OPTIONS & ACCESSORIES section below.

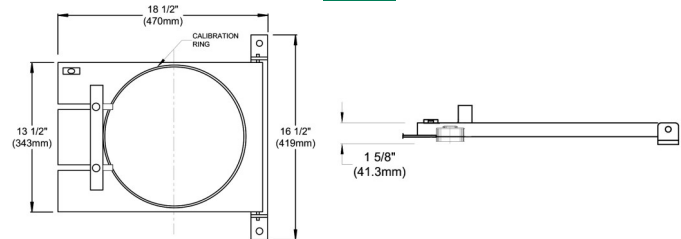


MODEL (METRIC)	# OF PLATFORMS (CYLINDERS)	CYLINDER SIZE	PLATFORM CAPACITY	DISPLAY INCREMENTS	SHIPPING WEIGHT
XT150-1	1	10 3/8" Diameter	300lb	0.1 lb or 1 lb	26 lb
XT150-2	2	10 3/8" Diameter	300lb	0.1 lb or 1 lb	46 lb
XT100K-1	1	203mm - 343 mm Diameter	150kg	0.1 kg or 1 kg	11 kg
XT100K-2	2	203mm - 343 mm Diameter	150kg	0.1 kg or 1kg	21 kg

MODELS: 4D150-1,-2; XT150-1,-2

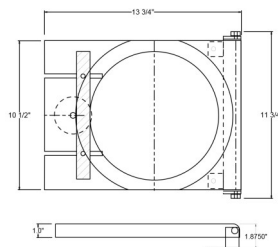


METRIC: 4D100K-1,-2; XT100K-1,-2



OTHER MODELS & ACCESSORIES

Hydraulic Gas Cabinet Scale™
Small footprint for limited spaces. See Bulletin 424.



OPTIONS & ACCESSORIES

CENTURY™ DIAL INDICATOR OPTIONS & ACCESSORIES	
Part No.	DESCRIPTION
MA150	Transmitter 4-20mA (10-30 Volt DC)
RS150	Adjustable alarm reed switch with 5 AMP manual reset relay
PWR-SUP	24 VDC power supply for transmitter

SOLO XT™ INDICATOR OPTIONS & ACCESSORIES	
Part No.	DESCRIPTION
XT150MA-1, -2	Hydraulic Chlor-Scale 150 w/ 4-20mA Output
XT150MAR-1, -2	Hydraulic Chlor-Scale 150 w/4-20mA Output & Level alarm relay
XTPWR	AC wall adapter- converts 110VAC to 12VDC for a loop power source

WWW.FORCEFLOWSCALES.COM

DRAWINGS • ENGINEERED SPECS • LITERATURE

2430 Stanwell Drive, Concord, CA 94520 USA | Tel: 925-686-6700
info@forceflow.com | www.forceflowscales.com



CHECK. CONTROL. COMPLY.