

IMPORTANT !

**FOR ACCURATE MEASUREMENT, ADJUST CLIPS
SO THAT TANK IS CENTERED ON PLATFORM.**

JOB REFERENCE _____ /s/ _____

SUBMITTAL DATA:

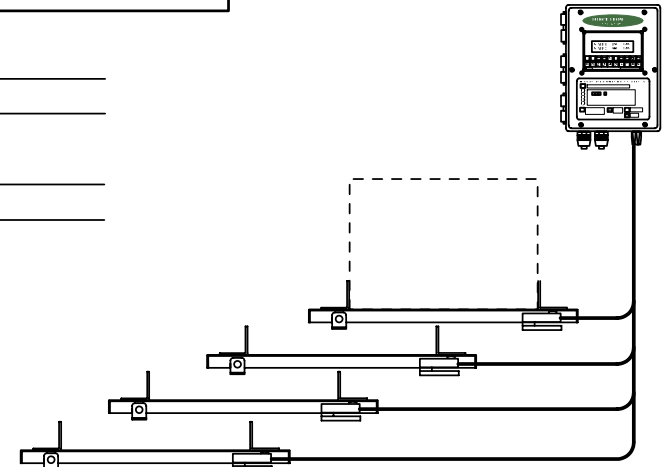
Qty	Platform/Sensor	Cable Length	Display Increments
		FT	
		M	
		FT	
		M	
		FT	
		M	

WIZARD INDICATOR MODEL NO: _____

4-20mA OUTPUTS _____

RELAYS _____ DRY CONTACT / SOLID STATE
N.O. / N.C.

OTHER OPTIONS: _____



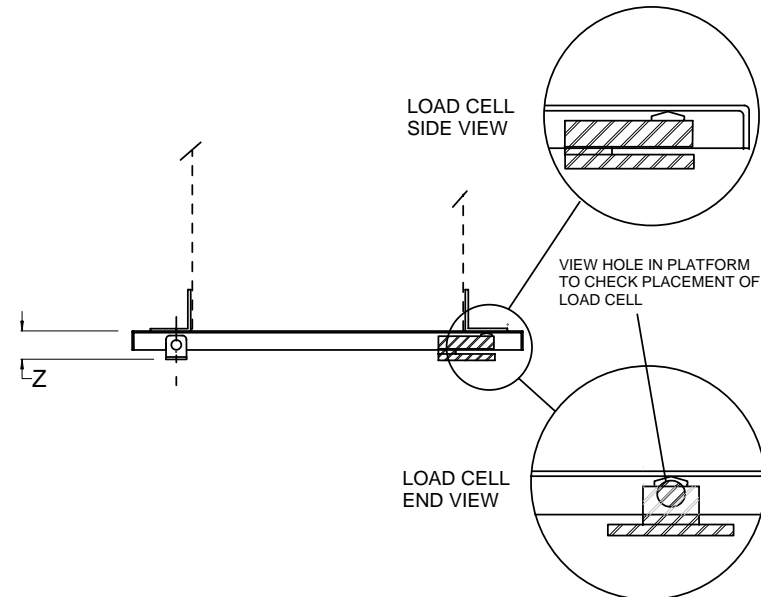
MODEL NUMBERS (for Load Cell & Platform)

Model No.	(Capacity)	Metric	(Capacity)	X	Y	Z	
30-DR10LP	(1000 lb)	30-DR5KLP	(500 kg)	30"	30"	3.25"	(762mm sq)
30-DR20LP	(2000 lb)	30-DR10KLP	(1000 kg)	"	"	"	"
40-DR30LP	(3000 lb)	40-DR15KLP	(1500 kg)	40"	40"	3.25"	(1016mm sq)
40-DR40LP	(4000 lb)	40-DR20KLP	(2000 kg)	"	"	"	"
50-DR50LP	(5000 lb)	50-DR25KLP	(2500 kg)	50"	50"	3.25"	(1270mm sq)
50-DR60LP	(6000 lb)	50-DR30KLP	(3000 kg)	"	"	"	"
60-DR80LP	(8000 lb)	60-DR50KLP	(5000 kg)	60"	60"	3.25"	(1524mm sq)
60-DR100LP	(10,000 lb)	60-DR60KLP	(6000 kg)	"	"	"	"
72-DR150LP	(15,000 lb)	72-DR80KLP	(8000 kg)	72"	72"	3.50"	(1829mm sq)
72-DR200LP	(20,000 lb)	72-DR100KLP	(10,000 kg)	"	"	"	"

Other Models: (For stainless steel platform add "S" to end of model number.)

MODEL NUMBER (for WIZARD Indicator)

4000-1	1-Channel WIZARD 4000 Indicator
4000-2	2-Channel WIZARD 4000 Indicator
4000-3	3-Channel WIZARD 4000 Indicator
4000-4	4-Channel WIZARD 4000 Indicator



W.1.103



1150-D Burnett Ave, Concord, CA 94520 USA
1-800-893-6723 US & Canada, Fax: 925-686-6713
www.forceflow.com / info@forceflow.com

File: T4\O&M\CHEMWIZ\CHEMWIZ.tcw (FW05.pdf) (WEB: CHEMWIZ.pdf) 11/2005
EMAIL/DRAWINGS/CHEM_WIZCHEM.pdf

ELECTRONIC LOW PROFILE CHEM-SCALE
with WIZARD 4000 INDICATOR
(Capacities to 20,000 lbs or 10,000 kg)

Drawn by: SLP

Date: 09/18/95

Revised: 08/31/05 MT

Scale: NONE

Drawing Number

30286

Checked by: MN