

MODEL NUMBERS (for Load Cell & Platform)

54-DR30TB (3,000 Lbs.) 54" x 54" x 3-1/4"
 54-DR40TB (4,000 Lbs.) 54" x 54" x 3-1/4"
 54-DR50TB (5,000 Lbs.) 54" x 54" x 3-1/4"
 54-DR60TB (6,000 Lbs.) 54" x 54" x 3-1/4"

 60-DR30TB (3,000 Lbs.) 60" x 60" x 3-1/4"
 60-DR40TB (4,000 Lbs.) 60" x 60" x 3-1/4"
 60-DR50TB (5,000 Lbs.) 60" x 60" x 3-1/4"
 60-DR60TB (6,000 Lbs.) 60" x 60" x 3-1/4"
 Other Models: _____

(For stainless steel platform add "S" to end of model no.)

MODEL NUMBER (for SOLO G2 Indicator)

SRG2-1 1-Channel SOLO G2 Indicator
 SRG2-2 2-Channel SOLO G2 Indicator

SUBMITTAL DATA:

Qty	Platform Model No.	Cable Length	Display Increments

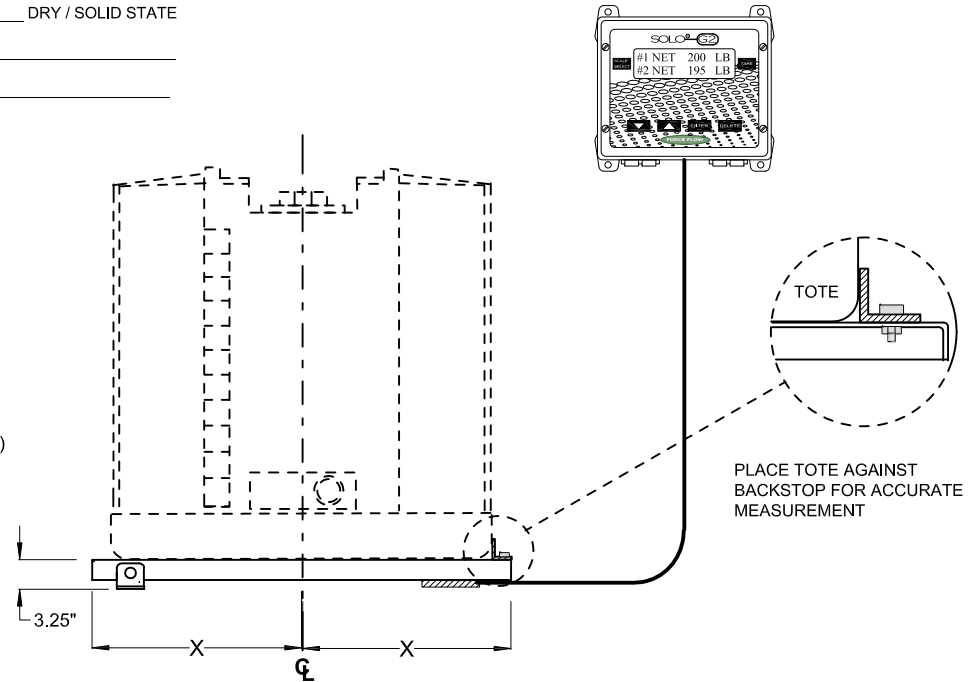
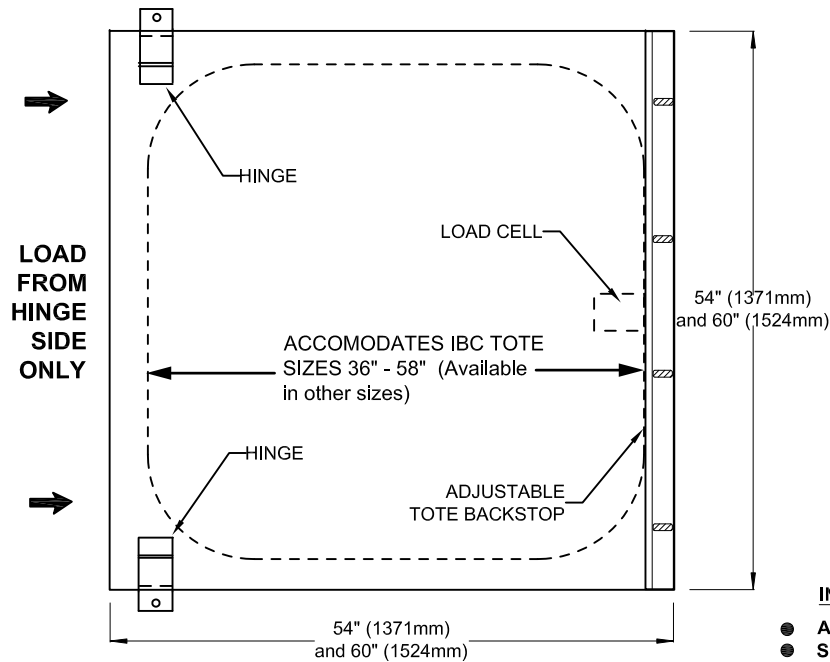
Solo Indicator Model No. _____

4-20mA Per Channel _____

Relays Per Channel _____ DRY / SOLID STATE

Other Options: _____

_____ MODEL NUMBER OF INDICATOR
 _____ MODEL NUMBER OF PLATFORM
 _____ FEET OF CABLE
 _____ POUNDS OR KILO INDICATOR
 _____ TOTE CAPACITY
 _____ TOTE DIAMETER



INSTALLATION NOTE:

- Adjust tote so that it is centered on platform from front to rear.
- Slide backstop to tote and secure.
- Adjust backstop only if tote size changes.

The backstop assists in loading by centering tote and prevents operators from accidentally "overshooting" the platform. We recommend using a forklift to load/unload totes. If a pallet jack is to be used, scale platform must be pit mounted so deck is flush with floor surface. Surface mounting with use of inclined load ramps is NOT RECOMMENDED.



2430 Stanwell Dr, Concord, Ca 94520 USA
 1-800-893-6723 US & Canada, Fax: 925-686-6713
 WWW.forceflow.com / Info@forceflow.com

ELECTRONIC IBC TOTE SCALE
 with SOLO G2 INDICATOR

Drawn by: KBV

Date: 3/04/09

Verified:

Scale:

Drawing Number

31455