

SUBMITTAL DATA

JOB REF: _____

MODEL NO: _____

SCALE CAPACITY: _____

MAX TANK DIA: _____

TUBING LENGTH: 12FT / 3.5M

POWER REQUIREMENT:

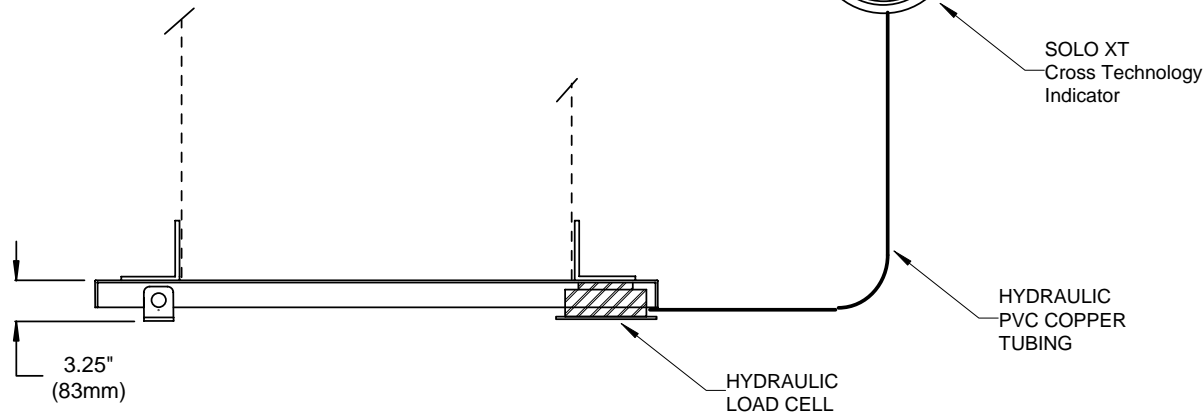
- BATTERY POWERED (2 ALKALINE "C" CELL)
- LOOP POWERED W/BATTERY BACK-UP

OPTION:

- 4-20MA OUTPUT
- DRY CONTACT RELAY

Model No.	Platform Dimensions
BATTERY (Standard)	
30-XT__LP	30" x 30" x 3.25"
36-XT__LP	36" x 36" x 3.25"
40-XT__LP	40" x 40" x 3.25"
54-XT__LP	54" x 54" x 3.25"
Optional 4-20mA:	
30-XTMA__LP	30" x 30" x 3.25"
36-XTMA__LP	36" x 36" x 3.25"
40-XTMA__LP	40" x 40" x 3.25"
54-XTMA__LP	54" x 54" x 3.25"
Optional 4-20mA & RELAY:	
30-XTMAR__LP	30" x 30" x 3.25"
36-XTMAR__LP	36" x 36" x 3.25"
40-XTMAR__LP	40" x 40" x 3.25"
54-XTMAR__LP	54" x 54" x 3.25"

For capacity, drop 2 zeros, i.e. 4000# = 54-XT40LP
 For stainless pltfm, add "S" after LP, i.e. 54-XT40LPS
 For kilogram capacity, drop 2 zeros and add "K"
 i.e. 2000 kg = 54-XT20KLP



X.1.104



2430 Stanwell Dr, Concord, CA 94520 USA
 1-800-893-6723 US & Canada, Fax: 925-686-6713
 www.forceflow.com / info@forceflow.com

File: T4\O&M\CHEMXT\XT\CHEM.tcw (MXT01.pdf)
 07/03/99 MB

HYDRAULIC LOW PROFILE CHEM-SCALE
 with CROSS TECHNOLOGY XT DIGITAL INDICATOR
 (Capacities to 4,000 lb/2000 kg)

Drawn by: SLP
 Date: 07/31/99
 Revised: 11/14/06
 Scale: NONE

Drawing Number
30525