

JOB REFERENCE _____ /s/ _____

SUBMITTAL DATA:

Qty	Platform/Sensor	Cable Length	Display Increments
		FT	
		M	
		FT	
		M	
		FT	
		M	
		FT	
		M	

Model Number (Frame and Load Cell)

DR120 (12,000 lbs)

DR60K (6,000 kg)

Model Number (Wizard 4000 Indicator)

4000-1 1-Channel

4000-2 2-Channel

4000-3 3-Channel

4000-4 4-Channel

WIZARD INDICATOR MODEL NO: _____

4-20mA OUTPUTS _____

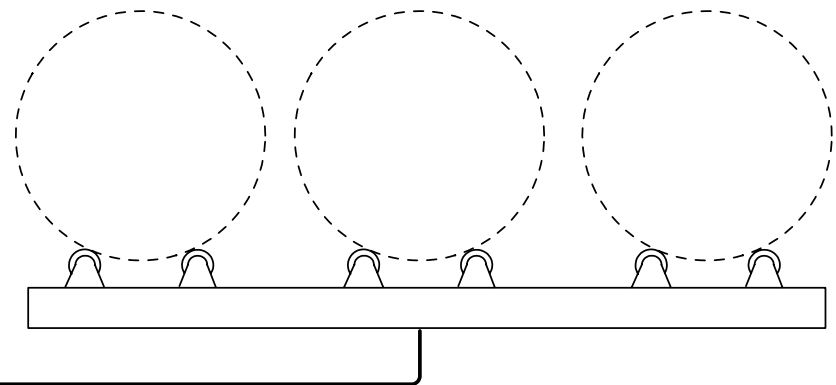
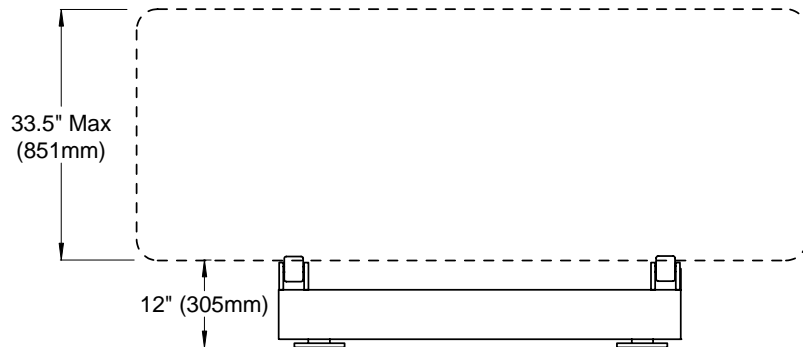
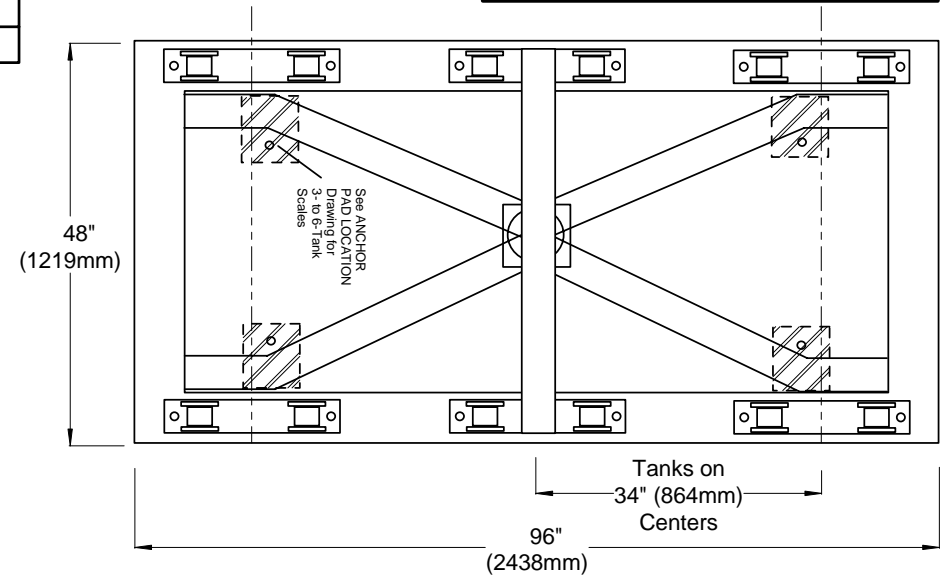
RELAYS _____ DRY CONTACT / SOLID STATE
N.O. / N.C.

OTHER OPTIONS: _____

NOTE: Use 1/2" x 1-1/2" (13 x 38mm) Anchor Bolts

RECOMMENDATION: 12" (305mm) minimum pad be used for each foot. DO NOT PREPOUR ANCHOR BOLTS. Use frame as template.

WEIGHT: 730 lbs/331 kgs
(palletized for shipment)



W.1.131



1150-D Burnett Ave, Concord, CA 94520 USA
1-800-893-6723 US & Canada, Fax: 925-686-6713
www.forceflow.com / info@forceflow.com

File: T4IO&MTONELECWIZ3TANK.tcw (J20.pdf) (WEB: TON3WIZ.pdf)

ELECTRONIC 3-TANK SCALE
CHLOR-SCALE with WIZARD INDICATOR
(12,000 lb. or 6,000 kg. Capacity)

Drawn by: SLP
Date: 09/01/95
Revised: 05/09/02
Scale: None

Drawing Number
30284