

PLATFORM MODEL NO:

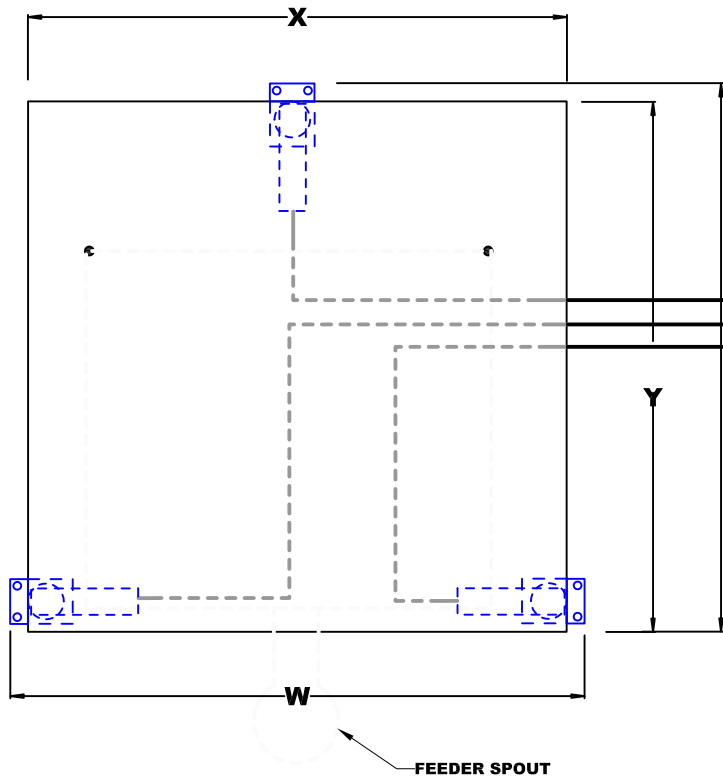
3-LOAD CELL MODELS:	V	W	X	Y	Z
27-DR____VF-HA3	29.0"	30.5"	27.5"	27.5"	2.00"
30-DR____VF-HA3	31.5"	33.0"	30"	30"	3.25"
40-DR____VF-HA3	41.5"	43.0"	40"	40"	3.25"
50-DR____VF-HA3	53.0"	53.5"	50.5"	50.5"	3.25"
60-DR____VF-HA3	61.5"	63.0"	60"	60"	3.25"

Capacities: 1000 lbs. to 5,000 lbs (to designate capacity in model number, drop two zeros from desired capacity (i.e. 30-DR10VF-HA3 = 1000# capacity)
 Other Models: Consult factory for metric models.
 For stainless steel platform add "S" to end of model number.)

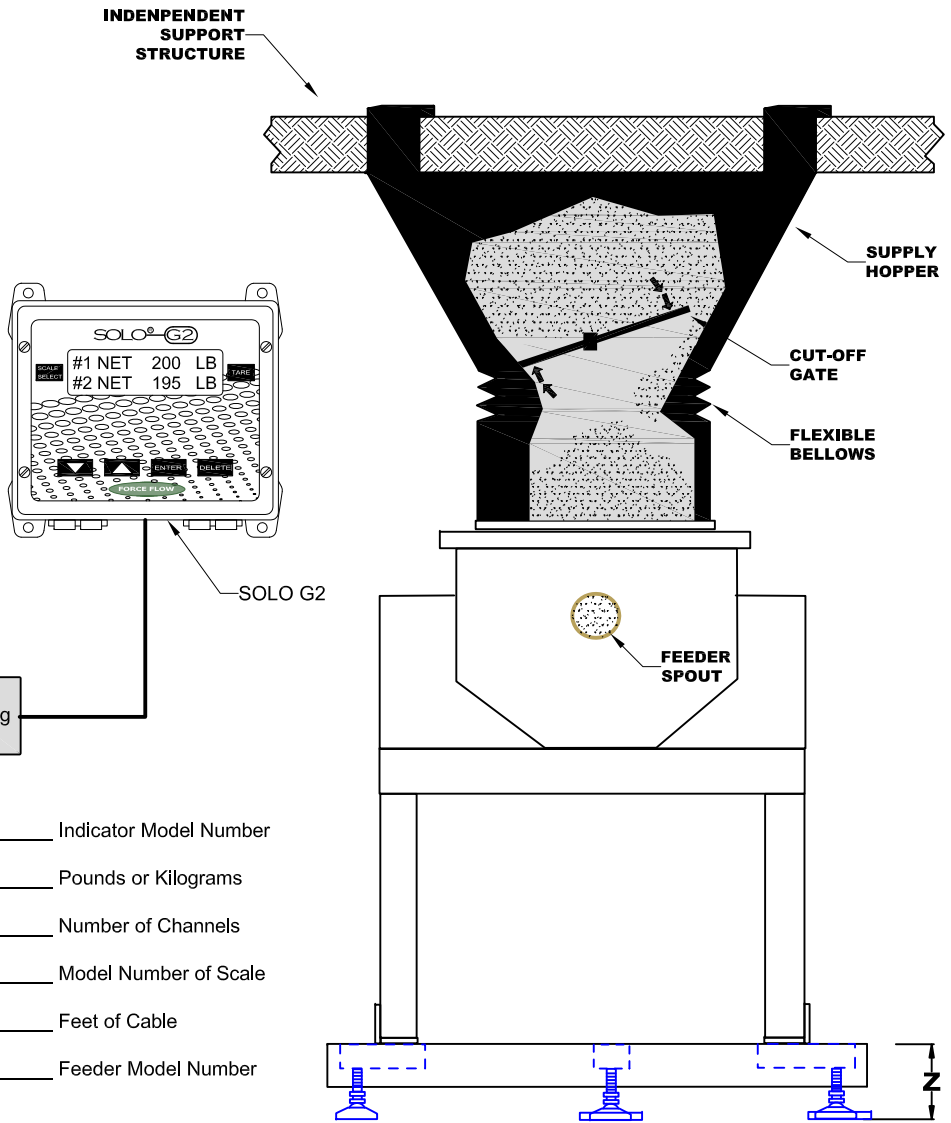
SOLO G2 Indicator:

SRG2-1 (1-Channel Indicator)
 SRG2-2 (2-Channel Indicator)

* PROVIDE FACTORY WITH FEEDER STAND FOOTPRINT FOR MOUNTING HOLE PLACEMENT



- _____ Indicator Model Number
- _____ Pounds or Kilograms
- _____ Number of Channels
- _____ Model Number of Scale
- _____ Feet of Cable
- _____ Feeder Model Number



PROVIDE FACTORY WITH FEEDER STAND DIMENSIONS FOR MOUNTING HOLE PLACEMENT.



2430 Stanwell Dr, Concord, Ca 94520 USA
 1-800-893-6723 US & Canada, Fax: 925-686-6713
 WWW.forceflow.com / Info@forceflow.com

VOLUMETRIC FEEDER SCALE
 with SOLO G2 INDICATOR

Drawn by: KBV

Date: 3/04/09

Verified:

Scale:

Drawing Number

31459