

PATENTED

D.R.I.P. TRAY CONDENSATION ROUTING SYSTEM FOR CHLORINE TON CONTAINERS

302

BULLETIN

## Droplet Routing Integrated Plastic TRAY

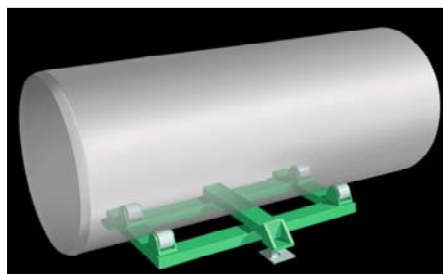
ELIMINATES SLIP  
HAZARDS DUE TO  
WET FLOORS

REDUCES CORROSION  
DAMAGE TO CHLORINE  
ROOM EQUIPMENT

RETROFIT EXISTING  
FORCE FLOW SCALES

PATENTED DESIGN

IDEAL FOR HUMID  
ENVIRONMENTS



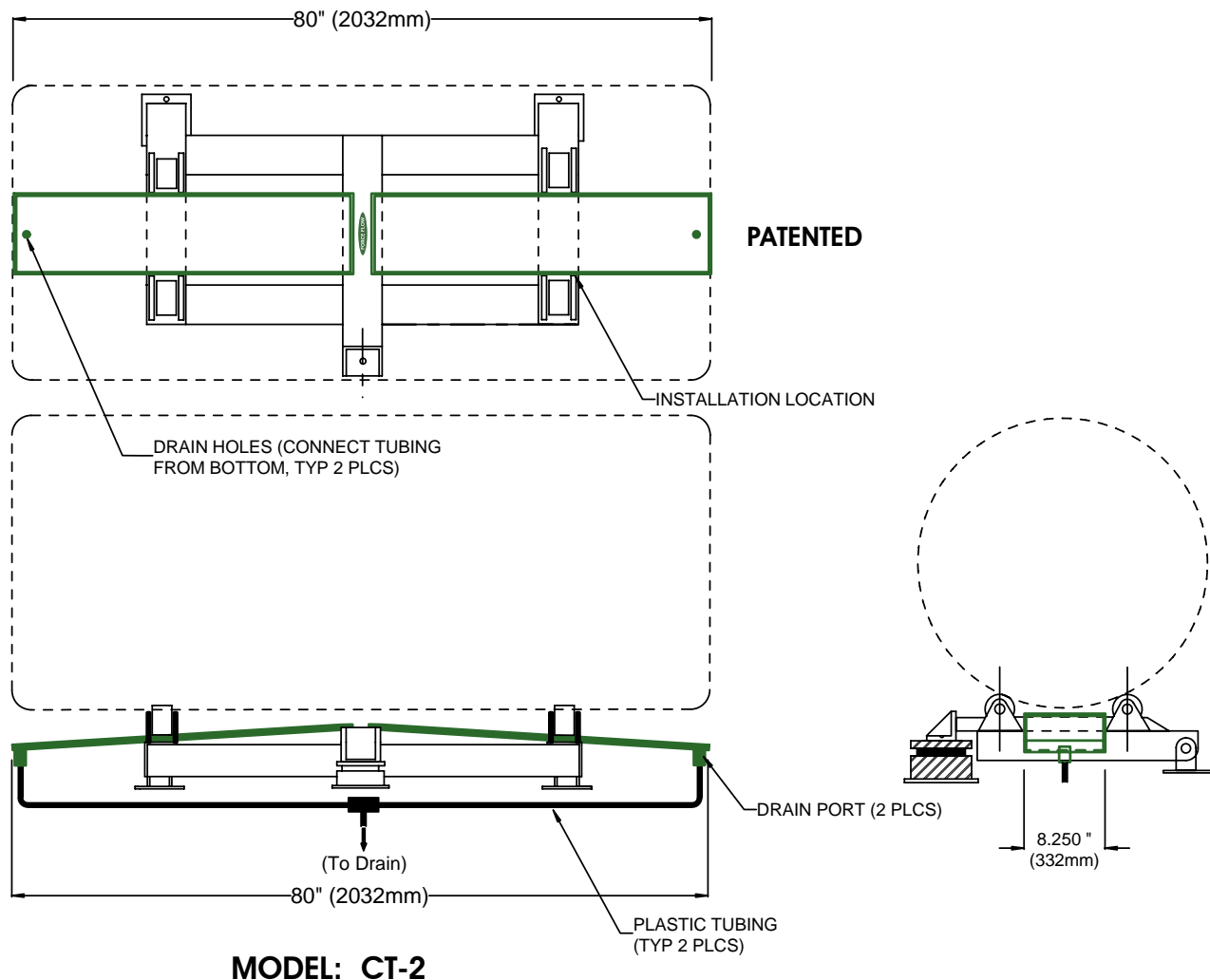
In warm humid environments, it is common for chlorine tanks to generate external condensation due to a cooling effect when the latent heat of vaporization cannot keep up with the chemical withdrawal rate. This condensation can become hazardous by making floors wet and slippery, as well as cause costly corrosion damage to virtually all the equipment in the chlorine room. Force Flow's innovative D.R.I.P. trays eliminate this problem by catching the condensation as it drips from the bottom of the tank and routing it to a local floor drain or slump.

FORCE FLOW

# Droplet Routing Integrated Plastic TRAY

## CONDENSATION ROUTING SYSTEM FOR TON CONTAINER SCALES

### PRODUCT INFORMATION



### TYPICAL SPECIFICATIONS

A quantity of two (2) Droplet Routing Integrated Plastic (D.R.I.P.) Trays shall be provided for each tank and shall be constructed of fabricated PVC plastic. Each tray shall have 1 drain port fitted with a polyethylene compression fitting and \_\_\_\_\_ feet of polyethylene tubing necessary to route moisture to appropriate floor drain or sump. The two D.R.I.P. trays placed end to end shall be 80 inches in length in order to span the entire length of USA standard ton containers. D.R.I.P. trays shall be Model CT-2 as manufactured by Force Flow, 2430 Stanwell Dr., Concord, CA 94520 USA ([www.forceflow.com](http://www.forceflow.com)). No equal is available as this is a patented item.

**FORCE FLOW**