

ELECTRONIC

CARBOY-SCALE™

FOR SMALL DRUMS AND CARBOYS

SAFELY MONITORCHEMICAL USAGE
AND LEVEL**FOR FLUORIDE,**SODIUM HYPOCHLORITE
AND OTHER CHEMICALS**SOLID PVC PLATFORM**

WILL NEVER CORRODE

WITH SOLO G2™ OR

WIZARD 4000™ INDICATORS

The Electronic Carboy-Scale™ provides a simple and accurate way to monitor how much chemical is being fed and how much remains in small drums and carboys. The single load cell, pivoted platform design has no moving parts. The scale platform is machined from a solid piece of PVC plastic and fitted with an epoxy powder coated stainless steel hinge. A single electronic strain gauge load keeps electronics to a minimum for increased reliability. This combination of components creates an ultra-durable scale for harsh chemical room environments.

Using a scale is the most accurate method available for monitoring chemical inventory and the proven design of the Electronic Carboy-Scale ensures that your monitoring ability will be available day in and day out.

The Electronic Carboy-Scale is available in three different platform sizes to handle drum capacities from 5 gallons up to 55 gallons.

NO FINGER POINTING.
NO FINE PRINT.™

WIZARD 4000
(1 TO 4 CHANNEL)
Bulletin 400



SOLO G2
(1 OR 2 CHANNEL)
Bulletin 516

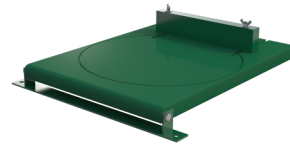
The Electronic Carboy-Scale can be ordered as a complete weighing system including a SOLO G2™ or Wizard 4000™ Digital Weight Indicator, or as just the scale platform to be combined with other scales or ultrasonic sensors monitored from a multi-channel weight indicator.

FORCE FLOW

MODELS & ORDERING INFORMATION

Electronic Carboy-Scale™ with SOLO G2™

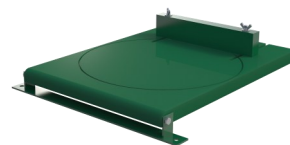
Models below include platform, electronic load cell with 10 feet of cable and SOLO G2 digital weight indicator with 4-20mA output signal. For more information on SOLO G2 digital weight indicator, see Bulletin 516.



MODEL	PLATFORM SIZE	MAX CAPACITY	TANK DIAMETER RANGE	SHIPPING WT.
GR200	18 1/2" X 13 1/2" X 1 5/8" (Hinge width 16 1/2")	200 lb	11" to 15 3/4"	28 lb
GR100K	470 X 343 X 41mm (Hinge width 220 mm)	100 kg	280 mm to 400 mm	13 kg
GR400	21 1/2" X 15 3/4" X 1 5/8" (Hinge width 18 3/4")	400 lb	13 1/4" to 18 1/4"	31 lb
GR200K	546 X 400 X 41 mm (Hinge width 475 mm)	200 kg	337 mm to 463 mm	14 kg
GR600	24" X 24" X 2" (Hinge width 27")	600 lb	16 1/2" to 23 1/2"	47 lb
GR300K	610 x 610 x 51 mm (Hinge width 686 mm)	300 kg	420 mm to 597 mm	21 kg

Electronic Carboy-Scale™ with Wizard 4000™

Models below include platform, electronic load cell with 10 feet of cable and Wizard 4000 digital weight indicator with 4-20mA output signal. For more information on Wizard 4000 digital weight indicator, see Bulletin 400.



MODEL	PLATFORM SIZE	MAX CAPACITY	TANK DIAMETER RANGE	SHIPPING WT.
WR200	18 1/2" X 13 1/2" X 1 5/8" (Hinge width 16 1/2")	200 lb	11" to 15 3/4"	26 lb
WR100K	470 X 343 X 41mm (Hinge width 220 mm)	100 kg	280 mm to 400 mm	12 kg
WR400	21 1/2" X 15 3/4" X 1 5/8" (Hinge width 18 3/4")	400 lb	13 1/4" to 18 1/4"	38 lb
WR200K	546 X 400 X 41 mm (Hinge width 475 mm)	200 kg	337 mm to 463 mm	17 kg
WR600	24" X 24" X 2" (Hinge width 27")	600 lb	16 1/2" to 23 1/2"	61 lb
WR300K	610 x 610 x 51 mm (Hinge width 686 mm)	300 kg	420 mm to 597 mm	28 kg

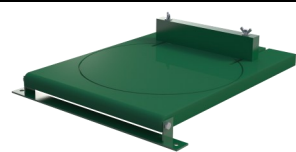
INDICATOR OPTIONS (see indicator datasheet for additional options)

SOLO G2™	WIZARD 4000™	DESCRIPTION
G5ASP	W5ASP	Relay for Level Alarm (up to 4)
DR-CABLE	DR-CABLE	Additional load cell cable (per foot)
GRS485	WRS485	MODBUS ASCII RS485 Serial Communication

Scale Platform Only (Indicator sold separately)

Use model numbers below when combining with other scales or ultrasonic sensors on a multi-channel SOLO G2 or Wizard 4000. Includes scale platform, load cell and 10 ft cable. Indicator sold separately.

MODEL	PLATFORM SIZE	CAPACITY	SHIPPING WT.
PVC200 (PVC100K)	18 1/2" X 13 1/2" X 1 5/8" (470 X 343 X 41mm)	200 lb (100kg)	16 lb (7kg)
PVC400 (PVC200K)	21 1/2" X 15 3/4" X 1 5/8" (546 X 400 X 41mm)	400 lb (200kg)	20 kg (9 kg)
PVC600 (PVC300K)	24" X 24" X 2" (610 x 610 x 51mm)	600 lb (300kg)	40 lb (18kg)



OTHER MODELS



The Electronic Carboy-Scale™ can also be combined with the Hypo Trak™ sodium hypochlorite monitoring system. See Bulletin 517.



Hi-accuracy electronic Carboy-Scales™ also available. See Bulletin 412.

WWW.FORCEFLOWSCALES.COM
DRAWINGS • ENGINEERED SPECS • LITERATURE

FORCE FLOW